



# Winter Tanners 2020 Report



The 42<sup>nd</sup> Winter Tanners was held on Sunday 19<sup>th</sup> January 2020, the weather forecast had been for a cold dry day, but the early morning saw the sun out for much of the day. The ground remained wet from earlier rain and mud defrosted during the morning. It was cold for early starters and also later in the afternoon. There were patches of mud but underfoot conditions were mostly good.

There was a record number starting; the entry limit was reached and the 'no show' proportion dropped to 18% (4% less than last year and well below the 26% of 2018). There were at least 40 more starters than the previous two years (for which the entry limit had moved to 500 from 450). There were 50 more entrants on the 20. Only 2 entrants retired, as last year, but somewhat less than the other prior years.

The fastest runners came in at just over 4hrs on the 20 and 6½hrs on the 30. The average time on the 30 was 1½ hours less than last year and on the 20 as 25 mins longer (? changing mix running/walking)



Summary results analysis is on the next page. Full results can be seen at [https://www.ldwa.org.uk/results/full\\_results.php?event\\_id=227](https://www.ldwa.org.uk/results/full_results.php?event_id=227) where you can see individual results and download as a spreadsheet (then rank and compare as you wish).



## WINTER TANNERS SUMMARY STATISTICS

Route miles	30	30	30	30	30	30	30	20	20	20	20	20	20	20	40
Year	2020	2019	2018	2017	2016	2015	2014	2020	2019	2018	2017	2016	2015	2014	2018
<i>Times: hours/minutes</i>															
Average	6:27	07:30	08:55	08:31	07:40	07:43	07:54	6:00	05:35	06:57	06:22	06:48	05:45	06:27	11:29
Median	6:22	07:22	08:30	08:28	07:35			5:58	05:47	07:04	06:32	06:53			11:25
Max	10:38	10:59	14:16	12:52	10:54	11:43	12:01	8:50	08:15	10:31	09:04	10:32	09:42	09:35	15:12
Min	4:03	04:43	05:23	05:21	05:10	05:01	04:15	3:11	03:17	03:48	03:29	02:56	02:53	03:33	07:39
Mileage	30.8	30.6	30.4	31.4	30.4	30.4		20.5	20.8	20.8	20.9	20.9	20.6		40.7
Average mph	4.2	4.2	4.2	3.7	4.0	3.9		3.6	3.8	3.2	3.3	3.1	3.6		3.1
Fastest mph	7.6	6.5	5.6	5.9	5.9	6.1		6.4	6.1	5.5	6.0	7.1	7.1		5.3
Entrants	296	317	162	329	309	301	266	206	158	138	121	141	147	184	193
Started*	236	223	131	225	242	200	166	201	149	129	116	118	122	131	103
Retired	1	2	1	11	9	8	5	1	0	5	2	5	2	2	2
Finished	223	221	149	214	203	192	161	189	149	133	114	143	120	129	76
<b>All routes</b>															
Entrants	502	475	494	450	450	448	450								
Started	412	372	366	341	360	322	297								
Finished	410	370	358	328	346	312	290								
Retired	2	2	8	13	14	10	7								
Did not show	17.9%	21.7%	26%	24%	15%	26%	24%								
Finished %	99.5%	99.5%	97.8%	96.2%	96.1%	96.9%	97.6%								

\*adjusted for most route switches

### Event information:

**2020:** Excellent conditions, Sunny crisp with initially frozen mud rain freshened earlier in week, cold pm. 30 route: south to Norbury Park, Denbies, along N Downs, Abinger Roughs (CP1), Shere, St Martha's (CP2), Newlands Cnr, NDW, Effingham Forest, Tanners (CP3), and Fetcham Downs. 20 cut across to 30 at Hackhurst Down. Fast times

**2019:** Excellent conditions, Sunny crisp day with little mud. 30 route went south Bagden Farm, Westcott, Holmbury St Mary, Pitch Hill Winterfold, Shere, Abinger Hammer, Ranmore, Tanners Hatch and back through Bagden Farm. The 20 went left the 30 at Abinger Bottom, to go through Wooton and up to Ranmore.. Fast times

**2018:** Added 40m route for 40<sup>th</sup> event (5 CP's organisationally demanding), started dry but light snow later in day, however established new records for mud and was very challenging. Routes went SE, Reigate Hill, Box Hill (v muddy/slippery descent). 40m went further S across fields towards of end of Gatwick runway. Upped entry limit to 500.

**2017:** Light snow previously, turned to rain over icy patches (weather off putting to many intending entrants), mud worse than 2016, Both PACER recording and MatOrtho HQ used for first time. Short route Fetcham Downs, Gomshall, Ranmore/Tanners. 30 also went on to Shere, Winterfold and Holmbury/Leith Hills.

**2016:** Poor weather previously, chilly but largely dry, mud freshened up and much standing water. Last use of Leatherhead Leisure Centre. 20m route East Horsley, Netley Heath, Ranmore with the 30m also going through Shere, Albury Heath and Gomshall .

**2015:** Poor weather previously, cold, initially overcast but dry throughout, mud freshened up by previous rain. Online recording first trialed. South past Dorking, Chadhurst Farm, and back through Ranmore. The 30 added Holmbury + Pitch Hill, Peaslake.

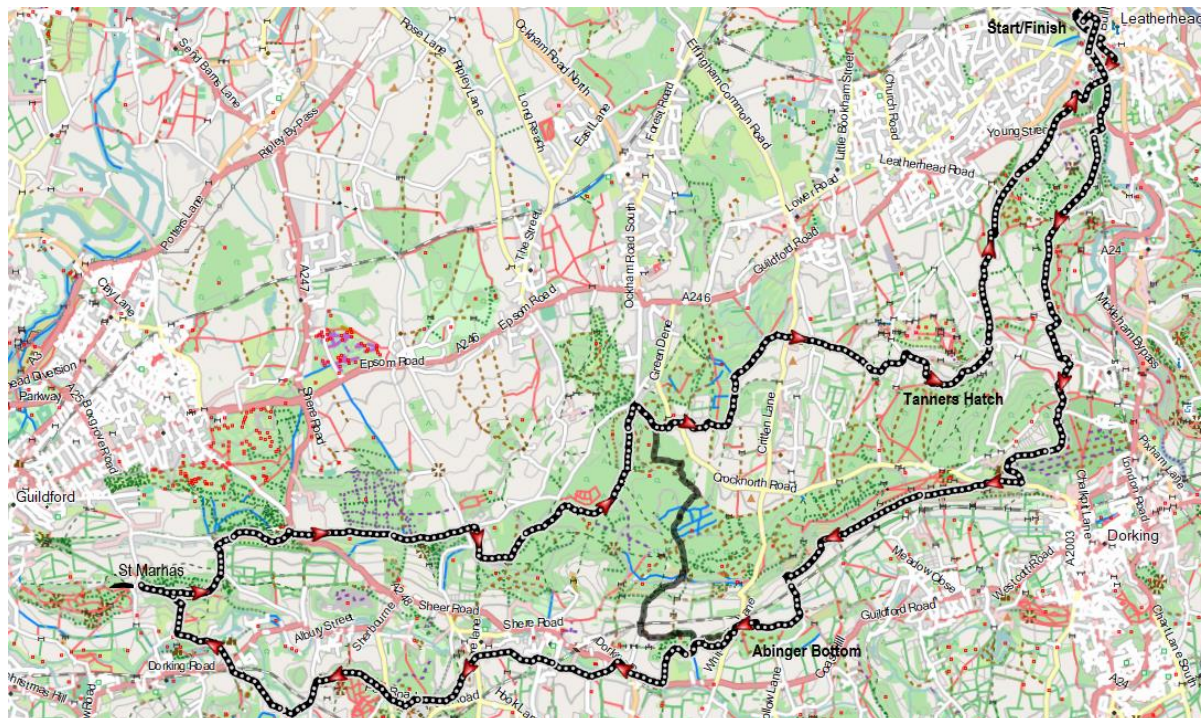
**2014:** Wet week before, sunny morning with beautiful views, but cloud/drizzle/wind later, skidded and slogged through still frozen fields. 1<sup>st</sup> use of Leatherhead Sports Pavillion. 20m went Headley, Westhumble, Ranmore with 30 also taking in Holmwood Common S of Dorking.

**2013:** Thickening snow from Saturday onwards made accessing some CPs impossible and some paths dangerously icy. With regret event cancelled on Saturday evening.



## The Routes

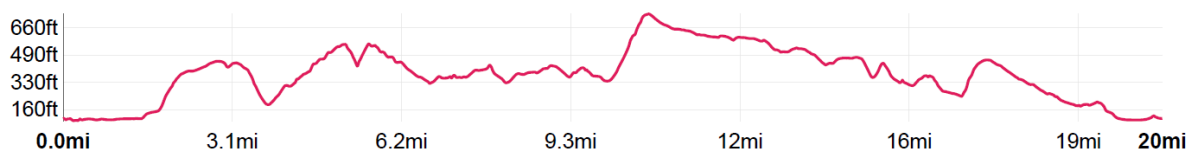
There was positive feedback about the routes with many saying that they were the best they could remember (with lots of good views once the early mist cleared). We were again grateful to John Westcott for devising the route and Mary Dee for implementing and checking.



The 30 route went south through Norbury Park, Denbies, flat along the side of North Downs (Ranmore, Baltchford Down and Steers Field), dropped down to Abinger Roughts (CP1, *mistakenly labelled Abinger Bottom above!*), Shere, St Martha's (CP2), Newlands Corner, east along North Downs Way, Effingham Forest, Tanners Hatch (CP3), past Polesden Lacy Eastate and across Fetcham Downs back to start. 20 cut across 30 over Hackhurst Down. Flood routes were not required (though the River Mole had flooded earlier in the week).

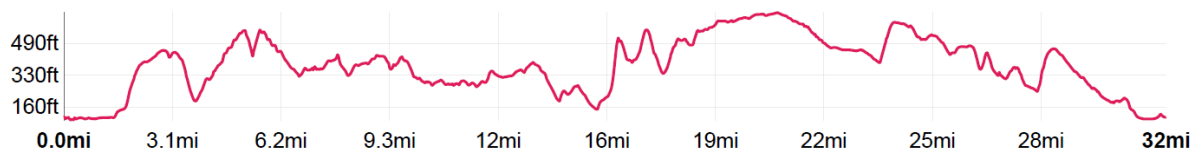
**20 mile route: 2,430ft ascent**

### Elevation Profile



**30 mile Route: 3,630 ft ascent**

### Elevation Profile



It is pleasing to see many other clubs supporting the WT. Apart from LDWA groups entries included: 100 marathon Club (20), Great Bentley Running Club (18), Wimbledon Windmilers (13), Runnymede Runners (12), Burnham Joggers (11), 1<sup>st</sup> Blackwater Scouts (10),



Blackwater Valley Runners (9), Dorking & Mole Valley AC (7), 26.2 Roadrunners (5) and Fitstuff (5). We are delighted to have such support. 1<sup>st</sup> Blackwater Scouts had 7 scouts walking the 20 (mostly under 16); Richard Llewellyn, their leader first walked the summer Tanners 30 when he was 13. We would like to see more capable younger entrants and will be looking to reintroduce a discounted junior entry fee.



We have been pleased to receive feedback on the event. Tara Williams, a regular WT'er, wrote:

*"The best route yet...and not a total mudbath!"*

*Thank you for a great day on Sunday. This route was (in my opinion) the best yet and took me on paths I never seen, despite the many hours I spend in the Surrey Hills area. A reminder of the Games 100 with the 'vertical ascent' to St Martha's was erm...very pleasant indeed...thank you!*

*A beautiful day made for an easy start on frozen ground but WT conditions soon took over as the ground thawed to mud but it was still 'tame' compared to some years.*

*However, I have not tackled cleaning my shoes yet!*

*Please pass on my thanks to everyone who put in the hard work, both before the event and on the day, to ensure that we were fed, watered and all had a great time."*

Our thanks to all others who expressed their thanks, we welcome constructive feedback.

Putting on the event was very much a team effort and that team (see last page) worked together to make it the tremendous event that it is. We really appreciate their efforts to make the event. Many thanks. Organisationally it went smoothly; no injuries, no lost walkers, it all worked well. We are grateful to all at MatOrtho at Leatherhead who made every effort to welcome the event to their building. We also received very efficient service from Adrian Moir and Ellie Salisbury at Fabian4 who handled our entries. You contributed £262 towards the National Trust.

The 43<sup>rd</sup> Winter Tanners will be on

**Sunday 17<sup>th</sup> January 2021**

We look forward to seeing you there.

Richard Ireson, Organiser,:

For Surrey LDWA, 23<sup>RD</sup> January, 2020

[surrey.wt@ldwa.org.uk](mailto:surrey.wt@ldwa.org.uk) [www.ldwa.org.uk/surrey](http://www.ldwa.org.uk/surrey)

See: more pictures at: <https://www.ldwa.org.uk/Surrey/W/6870/WT18-archive-gallery.html>

You can see the archive of previous WT routes, results and reports at:

[www.ldwa.org.uk/Surrey/W/2326/winter-tanners.html](http://www.ldwa.org.uk/Surrey/W/2326/winter-tanners.html)





# Thanks to the Marshals



**Registration/Start:** Tim Bedwell, Fiona Cameron, Mary Dee, Frank Eberle, Tony Cartwright,  
**Car Parking:** Mike Tuke, David Roy, Colin Jones, Ruth Coleman, Roger Sage



**Checkpoint 1, Abinger Roughts:**  
 Ray Rowe (Ldr), Liz Bryan, Ruth Coleman, Colin Jones, David Roy, Tony Davis, Mary Dee



**Split Marshals:** Janet Chapman, Avril Stapleton

**Checkpoint 2, St Martha's:**  
 Alastair Charlesworth (Ldr), Sue Charlesworth, Alan Shons, Ertan Ali Faik, Jo Taylor, Neil Jones, Colin Jones, Frank Eberle



**Checkpoint 3, Tanners Hatch:**  
 Mike Tuke (Ldr), Fiona Cameron, Stephen Ford, Tim Bedwell, Cathy Turton, Tony Davis



**Finish:** Juliet Eberle, Liz Bryan, Elton Ellis (Certificates), Tony Cartwright, Richard Ireson,  
**Driving/Pick-up:** Colin Jones, Neil Graham, Andy Fogell (*not required!*)  
**Standby Marshall:** Christopher Woodward (*not required!*)