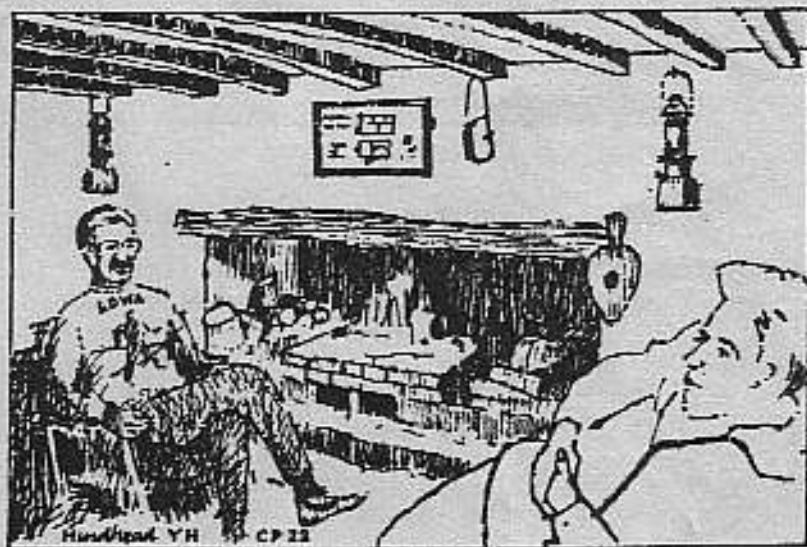


# THE SURREY SUMMITS

1984

Report & Results



**LDWA (Surrey Group)**

## SURREY SUMMITS 7/8 APRIL 1984

Once again I would like to thank all those who helped to make the Surrey Summits a success. If I have inadvertently missed anybody I apologize but can assure you that your efforts are no less appreciated.

I have received many letters and even more verbal messages from walkers asking me to extend their thanks to the marshals and helpers for the excellent way they were looked after. One of these letters is reproduced in these results.

### THE COMMITTEE

Barbara Blatchford, Louise Cartwright, Tony Cartwright, Dave Challenger, Jeff Ellingham, Ben Hadfield, Mervyn Harvey and John Westcott.

### PRINTING

Chris Steer

### SKETCH MAP

Frank Carey

### SHOPPING FOR RESULTS

Tony Youngs

### COMPUTER SERVICES

Tony Cartwright

### MARSHALS AND HELPERS ON THE DAY

Witley (start): Tony and Louise Cartwright, Valerie and Christine Challenger, Mervyn Harvey, Irene Woodyer and Jean Gardiner.

Hascombe: Valerie and Christine Challenger.

Holbury: Tony, Louise, Colin and Matthew Cartwright.

Ransmore: Roy and Olive Barnsley, Tony Lee, Dave Street, John Chandler, John Robinson, Judith Steer and Phyl Jackson.

Tanners: Richard Ireson, Phyl Jackson, Keith Chesterton, Graham Peddie and members of Tanners Hatch YH.

Guildford: Tony Cartwright, Ray Jolly, Ralph Henley, Jenny Bradford, Jim Dunster, Iona and Kim Pasplin, Colin Hayward and Ian Houghton.

Hankley: Roy and Olive Barnsley, John Robinson and Judith Steer.

Hindhead: Chris and Margaret Steer and Liz Pamplin.

Witley (finish): Carole and Ron Walters, Cynthia and Ian McLeod, Arthur Radley, Chris Meredith and Jeff Ellingham.

Emergency Telephone: Louise Cartwright.

Corpse Wagon Gang: Tony Lee, Dave Street, Richard Ireson, Tony Cartwright, Ray Jolly, Ralph Henley, Jim Dunster and John Westcott.

Radio cover was organized by the Hampshire Scouts Communications team: John Erale, Clive Sanders, Mike Pludeck, Mike White, Anthony Earley and Mandy Baker.

I would also like to acknowledge the co-operation I received from the following especially in connection with the manned checkpoints:

Peter Trafford Clark - Hon Secretary of the Hurtwood Control, David Musson - Regional Director of the National Trust as well as the many wardens etc responsible for the lands owned by the NT through which the route passes, Graham Peddie and Helen Forber, wardens of the Tanners and Hindhead Youth Hostels respectively, The Guildford Scouts, The Public Services Agency and the caretaker at The Chichester Hall.

#### FOUND

Navy Body Warmer, Orange Balaclaver, Pair of Red Woollen Gloves, Silva Compass with plastic Whistle, Silva Compass with out whistle and 1:50000 186 OS map without a cover. Please contact John Westcott at Chobham 6672 to arrange recovery.

A sum of money was also found. For this I will need to know the amount, denomination of the notes, what it was wrapped in and approximately where lost. Answers on a postcard please to reach me not later than 30th June. Only one attempt per entrant. First correct entry received will receive the money. In the event of not being claimed it will go to Surrey GROUP funds per the wish of the finder.



#### REPORT ON THE NINTH SURREY SUMMITS

LDWA members who took part in this year's Surrey Summits, got the bonus of having the April issue of Strider earlier than other members. I did view the decision to distribute the Striders before the event with some scepticism because I thought we may not be able to tear the entrants away from the compulsive reading to do the walk but it seemed after a brief anticipatory look at the current issue, walkers were prepared to get on with the job of helping to make the news for the next one.

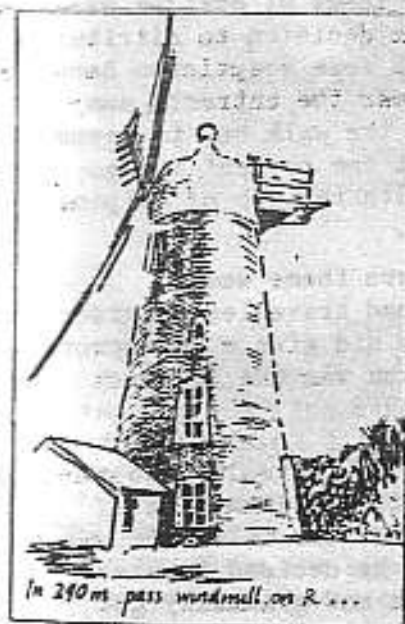
In his starters speech, Chris Steers theme was to illustrate the distances walkers had travelled in order to take part in the event. Jim Guy did give a disapproving murmur when it was suggested Taunton was the furthest point west but even the organizer did not know at that stage how far to the South East we were to attract an entrant from. Keith House, over from Cottesloe, Western Australia, came along to Witley with the intention of supporting his friend Justin Hardy on the walk. He was attracted to the walk so much that he decided to start walking part of the way with Justin and gradually got adopted by the marshals as an entrant. Unfortunately Keith did not finish the walk but he said he enjoyed it.

The weatherforecasters promised showers and certainly as the 162 walkers set off from Witley it did not look too promising but apart from a few spits in the wind it stayed dry enough. The reports I heard about conditions underfoot varied considerably but in the main reports of the course being muddy came from first time entrants whereas the declarations of a dry course came from the seasoned campaigners which in itself tells its own story. I can assure you that whatever your opinion it would have been a lot muddier if the event had been held over the previous weekend.

The marshals on the first "manned" checkpoint at Hascombe Hill were Valerie and Christine Challenger both of whom have assisted on most, if not all, Surrey Summits. Christine was still at school when she first helped set up the checkpoint in Holmbury Hill car park. For the 1984 event she was down from York University for the weekend to celebrate her 21st birthday but still managed to find time to assist on the early part of the event.

All went well through the Holmbury Checkpoint and after a slight hitch at Ranmore everything went well there. The hitch was caused by it being set up a little on the late side which was particularly embarrassing to me because it was the one checkpoint I was responsible for setting up.

The National Trust had been active where the eastern part of the route goes over their properties resulting in feature changes affecting the route description. The grazing of sheep on Juniper Top and the removal of the barbed wire barriers on Ranmore are both very welcome improvements but the timing of the implementation was a little inopportune coming as it did after the description had been finally checked but before the event. I hope having to note these changes at the start did not cause too much



inconvenience. I do know how tiresome it is to turn up at an event to find route changes to be noted but I can assure you on this occasion it was unavoidable.

There were one or two early retirements but with such a high proportion of the walkers getting past Tanners, I thought we were in for a record finishing rate. This prediction was strengthened as the gathering gloom gave promise of a fine warm night. In fact, when I was later waiting at the Hankley Checkpoint in that period just before dawn, I concluded it must have been the warmest night of any Surrey Summits.

The prediction of a high success rate was soon shattered as requests for transport from the Abinger/Share area and the Guildford (scout hut) marshals seemed to make walkers far too comfortable resulting in the number to venture forth from there being reduced to 123. One of the retirements at the scout hut was Keith House and it was as he was nursing his sore feet that he got acknowledgement of being an entrant by having the entry fee demanded from him. Still I am sure Tony Cartwright would still have arranged a lift for him back to Witley if he hadn't paid.

The Hankley Common checkpoint was sighted about 150 metres further along route than described in the route description which not only caused confusion among the walkers but also the marshals. Some of the earlier walkers to arrive were sent down the wrong track. Most of those who went the wrong way recovered quick enough but I did hear tales of Tony Twyman wandering all over Western Surrey. I think some of the places he is reputed to have visited are to some extent exaggerated if we bear in mind the time he took to get to the next manned checkpoint. Where John Robinson is you can bet he will attempt to set up a lof fire and the Hankley fire was very welcome making many walkers reluctant to leave whether on the correct or incorrect track.

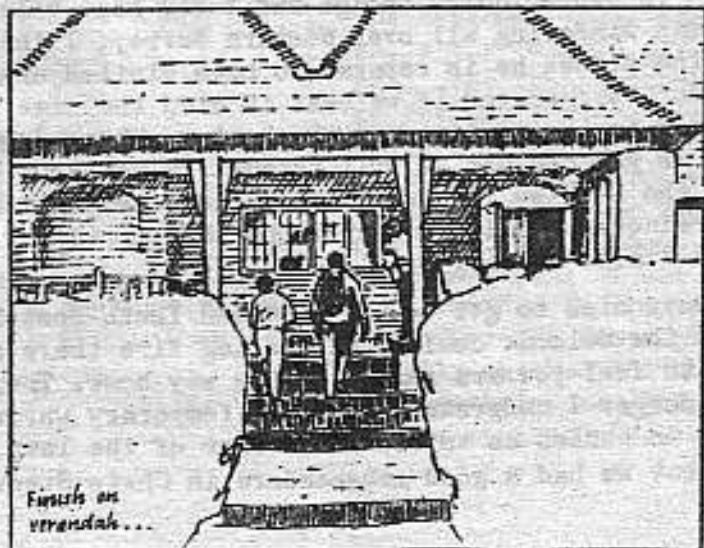
It is always nice to get to the Hindhead Youth Hostel, first for the welcome comfort of the log fire there and secondly to feel you are really on the way home. There was some danger I understand that the temporary warden was going to banish us to the far corner of the lawn outside, but we had a good ambassadore in Chris Steer

who managed to negotiate the facilities Surrey Summits walkers enjoy so much.

Even nicer is to ascend the steps at Chichester Hall, Witley. There were 117 walkers who did so but I am sure there was none more pleased to do so than Bill Stirling who completed his first Surrey Summits this year at the age of 76. Bill has many notable walking achievements behind him as a septuagenarian, including successful completion of many of the tough northern overnight challenge walks and the Pilgrims 100 in 1982. However, in spite of 5 previous attempts, The Surrey Summits certificate has always eluded him until this year. Bill eagerly purchased a badged at the finish.

Just 2 years Bill's junior is Henry Bridge, another of the LDWA's septuagenarians well known on the big walks circuit. It is nice to see Henry keep coming back to our event because he has now completed 5 Surrey Summits and I have a very good photo of him precariously crossing the stepping stones with the river Mole in full spate lapping at his ankles on the 1982 event.

Another first time finisher who declared himself to be "chuffed" (with the air of one achieving a lifetime ambition) was the Surrey Group chairman, Dan Hadfield. Dan has mainly devoted his efforts to assisting on the Surrey Summits. He had previously completed a marshals



walk and failed on his only other "on the day" attempt falling victim to the snow in 1981.

There were 4 married couples to finish and 2 sets of brothers but I think Iva and Alan Barr have set up a new precedent in being the first mother and son to finish the course together.

One notable achievement is that only one of the female starters failed to get round. Even the one who did not make it strove on valiantly to Hankley Common before giving way to accepting a lift back to Witley.

In 1985 we are holding the 10th Surrey Semite. We hope to be starting from the traditional place at Tunsgate, Guildford High Street and the date will almost certainly be the weekend of 30/31 March 1985. Rumour has it that will be the weekend the clocks go forward which should cause some fun. Hope to see you then.

John Westcott (organizer)

#### THE WALKING ONLY RULE

We have never set up a judging system to enforce the walking only rule hoping that entrants would honour their undertaking to abide by the rules when they sign the entry form. Even so a few entrants every year, at times, have used a form of movement which obviously contravenes this rule. I have tried to persuade the guilty ones to keep to the rules but the problem has got worse. On the 1984 event some of the faster entrants were quite openly running with no attempt to disguise the fact.

In order to protect the credibility of the event the committee felt some penalty should be imposed. They decided that the faster entrants who had been seen by officials not to have been walking throughout the event would be recorded at the end of the results. They would be credited with having completed the event but the time would not be recorded in official records. The decision does not imply that all other walkers kept to the rules.

Any change in the arrangements for the 1985 event to monitor the rule will be included in the details sent out with entry forms.



Ninth Surrey Summits (1984) - Results

NAME	CLUB	GRUP	9th	10th	11th	12th	13th	14th	15th	16th
Tony	TYNMAN	Ecc/Harts	1.03	2.20	4.23	7.09	10.14	12.36	14.73	16.03
Peter	YOUNG	Surrey	1.09	3.10	5.13	7.32	10.25	13.11	14.39	16.22
Phil. W	HASTINGS	Keat.	1.04	2.59	4.57	7.14	10.20	13.07	14.41	16.32
Roger	RICHVELL	Shereood	1.04	2.59	4.57	7.14	10.20	13.07	14.41	16.32
Anthony. B	POMLEY		1.04	2.59	4.57	7.14	10.20	13.07	14.41	16.32
Rark. I	RUTTER		1.09	3.09	5.09	7.29	10.47	12.36	15.12	17.00
Paul	RUTTER		1.09	3.09	5.09	7.29	10.47	13.31	15.12	17.00
Sue	COLES	Nesses	1.04	3.04	5.10	7.32	10.32	13.31	15.14	17.13
Sue	HARDFIELD	Surrey	1.07	3.06	5.10	7.32	10.32	13.31	15.14	17.13
Jeffrey. W	TREAWAY	Ecc/Harts	1.05	3.09	5.10	7.32	10.32	13.31	15.14	17.13
Roger	OSGOOD	LMA	1.07	3.09	5.13	7.32	10.35	13.31	15.14	17.13
George	FOOT		1.07	3.15	5.24	7.52	11.46	14.29	16.26	18.24
John. B	FRIEND	Nesses	1.07	3.08	5.21	7.40	11.10	14.43	16.46	18.26
Richard. A	EMBLEY	R.E.L.	1.04	3.06	5.08	7.32	11.10	14.14	16.26	18.44
Brian. J.C.	MILL DAMS	Ecc/Harts	1.04	3.09	5.12	7.32	11.10	14.16	16.26	18.44
Wigol	ROBINSON	High Peak	1.05	3.00	5.11	7.52	11.36	14.47	16.38	19.12
Dave	CHALLENGER	Surrey	1.10	3.16	5.24	8.11	11.58	15.06	16.50	19.12
Shirley	HARE	Thames. V	1.00	3.13	5.26	7.52	11.45	14.50	16.31	19.18
Chris	HARE	Thames. V	1.00	3.14	5.26	7.52	11.45	14.59	16.51	19.18
Bobbie	THOMPSON	Nesses	1.07	3.11	5.26	7.52	11.36	14.47	16.51	19.18
Len	HILLCOCKS		1.12	3.21	5.29	8.11	11.59	14.59	17.03	19.18
Dave	WOODYER	Surrey	1.12	3.21	5.29	8.11	11.59	15.00	17.03	19.18
Paul. R	WRIGHT	RIF Group	1.09	3.10	5.15	7.52	11.52	14.47	16.54	19.33
Ivan	VERREL	Foot	1.10	3.17	5.24	8.09	11.52	14.47	16.54	19.33
Alan. S	CASTLE	Susses	1.12	3.21	5.24	8.09	11.52	14.47	16.54	19.35
Brian	TING	Susses	1.12	3.21	5.27	8.09	11.52	14.47	16.54	19.35
Kenneth	MARSHALL	Staffs	1.12	3.21	5.44	8.31	12.30	15.20	17.20	19.42
John. P	TORREN	Nesses	1.09	3.20	5.45	8.31	12.30	15.20	17.20	19.42
David	SHITH	Bridgess	1.06	3.00	5.25	8.11	12.15	15.20	17.29	19.44
John. H	SEARLE	Amelian	1.14	3.20	5.43	8.10	12.15	15.20	17.29	19.44
Gordon	BEATTIE	Keat.	1.14	3.20	5.43	8.10	12.15	15.20	17.29	19.44
Sam	ROBERT	Keat.	1.14	3.20	5.43	8.10	12.15	15.22	17.29	19.44
Sandra. A	HOUGHTON	Felt. Puff	1.20	3.43	6.11	8.49	12.42	15.51	18.09	20.31
Paul. V	HOUGHTON	Felt. Puff	1.20	3.43	6.11	8.49	12.42	15.51	18.09	20.31
Kath. J	HENNETT	Surrey	1.22	3.40	6.01	8.46	13.09	16.15	18.12	20.30
Brian. J	BICKLE	Surrey	1.22	3.40	6.01	8.44	13.09	16.15	18.12	20.30
Richard	HUTCHINSE	Nesses	1.25	3.47	6.12	8.51	13.09	16.15	18.12	20.30
Donald	WILLIAMS		1.22	3.47	6.14	9.01	13.12	16.25	18.23	20.40
John. S	TAYLOR	Susses	1.13	3.20	5.46	8.31	12.42	15.51	18.09	20.50
Don	DYKE	Thames. V	1.15	3.31	5.40	8.30	12.42	15.51	18.09	20.50
Keith	WARREN	Keat.	1.20	3.35	5.40	8.31	12.37	15.52	18.09	20.50
Cecil	BLON	Ecc/Harts	1.09	3.23	5.40	8.20	12.42	15.52	18.12	20.50
Jan. A	RUTHERFORD		1.13	3.22	5.37	8.29	12.42	15.51	18.09	20.53
Pauline	WILSON	Ecc/Harts	1.15	3.31	5.39	8.46	12.42	15.51	18.09	20.53
Justin. L	HODDY		1.13	3.41	6.04	8.51	13.12	16.25	18.23	20.53
Barry	POWELL		1.15	3.31	6.00	8.51	13.24	16.25	18.23	20.53
Chris	COATES	Surrey	1.20	3.40	6.10	9.01	13.21	16.33	18.40	21.03
Tom	THOMAS	Surrey	1.20	3.47	6.12	9.01	13.21	16.33	18.40	21.03
Louise	LOWE	Foot	1.20	3.43	6.12	9.06	13.33	16.33	18.40	21.03
Chris	SWEETNAM	Shereood	1.17	3.22	5.49	8.30	13.24	17.00	19.44	22.00
Chris. G	LEWIS	Ch. Strag	1.15	3.31	6.03	9.01	13.22	16.50	19.47	22.15
Phillip	EDWARDS	Ch. Strag	1.15	3.31	6.00	9.01	13.24	16.50	19.47	22.15
Rark	EDWARDS	Ch. Strag	1.16	3.31	6.03	9.01	13.23	16.59	19.47	22.15
Anthony. J	TAYLOR	Surrey	1.06	3.00	5.23	8.10	12.50	16.25	19.31	22.22
Rark. V	ADAMS		1.20	3.42	6.14	9.01	13.36	17.05	20.12	22.22

NAME	GROUP	SEA	116a	121a	126a	131a	136a	141a	146a	151a	156a	161a	166a
Barry, E	WISHP	LMA	1.22	3.42	4.14	9.01	13.34	17.05	20.12	22.22			
James, B	SHEATH	Wesdel	1.25	3.51	4.15	9.30	14.23	18.00	20.22	22.30			
Ken	WATERS	Surrey	1.25	3.51	4.30	9.29	14.04	17.59	20.22	22.30			
Alan, B	ASH	LMA	1.25	3.53	4.15	9.20	14.23	18.00	20.22	22.32			
Brian	ELCE	Ess/Herts	1.25	3.53	4.17	9.20	14.23	18.00	20.22	22.34			
Ken	BILLINGER	Shrewsb	1.12	3.21	5.49	8.38	13.25	17.00	20.22	22.34			
Ken	SCOTT		1.22	3.42	4.04	8.49	13.25	17.50	20.22	22.34			
David, B	MIDDLETON		1.22	3.42	4.03	8.51	13.25	17.50	20.22	22.34			
Michael, J	RUBIALS	Thames, V	1.10	3.35	4.04	9.01	13.25	17.05	20.12	22.44			
Morton, J	CHARLEY	Ess/Herts	1.42	3.42	4.15	9.45	14.04	17.50	20.22	22.44			
Brian	BUTTFIELD	Kent	1.14	3.51	4.05	9.41	14.42	17.50	20.22	22.48			
David, B	SMITH	Bridgford	1.13	3.30	5.01	8.49	13.40	17.50	20.22	22.50			
Barton, F	FACER	Anglia	1.27	3.51	4.22	9.30	14.30	18.20	20.34	22.50			
Mary	BRIDGE	Anglia	1.26	3.51	4.24	9.30	14.30	18.20	20.34	22.50			
Harold	GRAY	Thames, V	1.10	3.45	4.35	9.37	14.40	18.17	20.40	22.57			
Jeff	CARBELL	C.Les, YMA	1.11	3.21	5.44	8.30	13.40	17.50	20.22	23.04			
Morton, J	STAPLES	Croy, Hurr	1.20	3.45	4.10	9.09	14.00	17.50	20.22	23.04			
Ray	WADWIN	BM	1.23	3.57	4.34	9.37	14.40	18.13	20.40	23.14			
Paul	SALONIA		1.20	3.44	4.22	9.37	14.35	18.17	20.40	23.14			
Len	FALLICE	LMA	1.29	3.44	4.24	9.37	14.30	18.17	20.40	23.14			
Alan, J	WILTSHIRE	S.Lance	1.17	3.52	4.24	9.30	14.41	18.20	20.40	23.14			
Michael, P	WENSON	Bridgford	1.20	3.41	4.28	9.37	14.30	18.17	20.40	23.22			
Iva, B	DAVE	Wesdel	1.16	3.40	4.09	9.01	14.02	17.50	20.43	23.20			
Alan, J	BARR	LMA	1.14	3.40	4.09	9.01	14.02	17.50	20.43	23.20			
Philip, J	BUTLER	N.Staffs	1.14	3.33	4.08	9.20	14.40	18.17	20.50	23.20			
Chris, B	SCUDMAN	Ess/Herts	1.23	4.26	7.22	10.00	15.42	19.24	21.24	23.24			
John, F	WAD	Soss	1.29	4.26	7.22	10.20	15.42	19.24	21.24	23.24			
James, B	DRAPER	Wessex	1.25	3.49	4.30	9.37	14.50	19.00	21.29	23.24			
Roger	WINTERBURN	Wessex, CMA	1.20	3.42	4.37	9.37	14.50	19.00	21.29	23.24			
Kenneth, C	CORRIE	Wesdel	1.25	3.52	4.20	9.37	14.50	19.00	21.29	23.24			
David	MILLSHAM	Wessex, CMA	1.20	3.49	4.31	9.37	14.50	19.00	21.29	23.24			
Thomas, A	BICKINSON	Wessex, YMA	1.21	3.51	4.33	9.37	15.00	19.00	21.29	23.24			
Harry	BICKINSON	Wessex, YMA	1.21	3.51	4.33	9.37	15.00	19.00	21.29	23.24			
Geoffrey	STOTT		1.24	3.57	4.41	10.00	15.00	19.19	21.35	24.02			
Diana	WARTON	Thames, V	1.21	3.52	4.37	9.47	15.00	19.19	21.35	24.02			
John	WARTON	Thames, V	1.21	3.52	4.37	9.47	15.00	19.19	21.35	24.02			
Jack	RUSGONE	Kent	1.22	3.51	4.31	9.47	15.00	19.19	21.35	24.02			
Dorothy, M	HARSHALL	Sussex	1.22	3.52	4.39	9.47	15.00	19.19	21.35	24.02			
David, J	DAWLEY	MA	1.24	4.09	7.04	10.20	15.44	19.19	21.45	24.24			
Brian, F	CROSSLEY	Hole, Val.	1.24	4.09	7.04	10.20	15.44	19.19	21.45	24.24			
Sal	COSEJA	Hole, Val.	1.25	4.09	7.07	10.20	15.44	19.19	21.45	24.24			
Geoff	BEECH	Sussex	1.22	4.07	4.55	10.20	16.43	20.15	22.21	24.39			
Paul, C	CLIFFORD	Sussex	1.22	4.07	4.55	10.20	16.25	20.15	22.21	24.39			
Mil-	WHITE	T, V	1.27	4.14	7.06	10.20	15.50	19.55	22.21	24.49			
William, L	STIRLING	Ess/Herts	1.24	4.14	7.04	10.20	15.50	19.55	22.21	24.49			
Barbara	BLANCHFORD	Surrey	1.17	4.14	7.04	10.20	15.50	19.55	22.21	24.49			
Deve	FORLAD	V.Scoots	1.21	3.56	4.34	9.47	15.00	19.50	22.21	24.49			
Suzie	CLARK	Sussex	1.22	4.07	4.55	10.20	16.25	20.15	22.21	24.49			
Anton, G	CARTER	Sussex	1.23	4.08	4.55	10.20	16.25	20.15	22.21	24.49			
John, W	RUSH	Sussex	1.21	4.08	7.05	10.20	16.25	20.15	22.21	24.49			
Bill	GRACE	Surrey	1.17	3.35	4.03	9.01	14.22	19.02	21.37	24.53			
Alan, E	WOODWARD	Fell, Post	1.37	4.24	7.13	10.20	16.25	20.15	22.20	25.14			
Robert	WATTS		1.25	4.01	4.19	9.16	15.35	19.50	22.52	25.27			
Robert	SMALL		1.24	4.04	4.57	10.20	16.25	20.30	22.47	25.28			
Richard	BROWN	Wessex	1.43	2.45	4.32	6.45	9.27	11.31	13.10	15.00			
Chris	BUTTERFIELD	Thames, V	1.24	4.06	4.57	10.20	16.25	20.30	22.50	25.10			
Marshall	HILLEN	Surrey	1.14	3.53	7.06	10.48	17.20	21.54	25.10				
Steve	BACKETT	Surrey	1.07	3.14	5.21	7.53	12.52	16.00	20.00	24.00			
Bruce	ROBERTS	Ess/Herts	1.17	3.22	5.37	8.29	12.42	16.00	20.00	24.00			

NAME	GROUP	80s	70s	75s	60s	65s	70s	100s
Gary, A	STAPLES	Surrey	1.17	3.30	5.48	8.49	13.12(R)	
Keith	NOBLE		1.25	3.46	6.15	9.01	13.12(R)	
Tom, B	KIDDLER		1.11	3.21	5.44	8.38	13.15(R)	
Allan, B	WILCOCK	Sutton RC	1.12	3.22	5.60	8.38	13.24(R)	
Alan	BRODS		1.21	3.42	6.13	9.09	13.34(R)	
Keith	HOUSE		1.13	3.41	6.04	8.51	14.22(R)	
David	SCARBOROUGH	Staffs	1.14	3.33	6.00	9.20	14.41(R)	
Richard	BUTLER		1.25	4.01	6.17	9.16	14.50(R)	
Michael, J	GAMLY	Kent	1.20	3.46	6.29	9.37	15.01(R)	
Trevor, P	SYMONS	Anglian	1.27	3.57	6.24	9.47	15.41(R)	
Anthony, R	RAYNARD	LeighaV8	1.21	3.56	6.36	9.47	15.49(R)	
Steven, J	ROSE		1.24	4.01	6.44	10.00	15.24(R)	
R. W	BARTON		1.24	4.01	6.44	10.00	15.24(R)	
Patrick	DUFFY		1.24	4.01	6.44	10.00	15.24(R)	
David	GANNES		1.25	4.01	6.16	9.16	15.33(R)	
Alan	GARDNER	Felt, Puff	1.37	4.24	7.13	10.28	16.50(R)	
Peter	PHAIR	Felt, Puff	1.37	4.24	7.13	10.28	16.50(R)	
Jeff	ELLINGHAM	Surrey	1.05	3.00	4.54	7.17(R)		
Stephen, B	SPINKER		1.04	3.00	5.23	8.44(R)		
Brian	HATZ	Surrey	1.20	3.45	6.14	9.01(R)		
Tom, B	PRESTON		1.25	4.01	6.19	9.16(R)		
Christopher	COLE		1.25	4.01	6.26	9.20(R)		
Anthony, J	SOUTER	LeighaV8	1.22	3.44	6.04	9.37(R)		
Peter	CAULFIELD	Surrey	1.13	3.32	6.18	9.37(R)		
Christopher	GRAYSON		1.13	3.32	6.20	9.37(R)		
Richard, C	HEBB		1.20	4.00	6.47	10.00(R)		
Kevin, R	HEBB	Surrey	1.20	4.00	6.47	10.00(R)		
Paul	MORGAN	C. Lea, YMA	1.30	4.04	7.05	10.40(R)		
Roger	SMITH		1.37	4.23	7.13	10.40(R)		
Paul, H	STANTON	Cran. Sch.	1.31	4.40	7.23	- (R)		
Paul, B	DUFFIN	Cran. Sch.	1.31	4.40	7.23	- (R)		
Crane	BISHOP	West	1.04	3.04	5.13(R)			
Albert, E	FLEMING	Thames, V	1.20	3.43	6.40(R)			
John, B	HUTTER	RAF Club	1.18	3.34	7.47(R)			
Christopher	NERIDITH	Ess/Karts	1.29	4.20	8.42(R)			
Nervyn, K	HARVEY	Surrey	0.59	2.43(R)				
Peter	BARNETT	West	1.04	3.09(R)				
Colin, A	HAYWARD	Ess/Karts	1.13	3.20(R)				
Iain	HOUGHTON		1.13(R)					
Robert	WILKINS	LDWA	1.33(R)					
Jia	SUI		1.05	3.00	4.53	6.45	9.44	11.34
Ajan	IFLAND	West Peak	1.05	3.00	4.53	6.59	9.44	11.34
Arjan, J	WILKES	London	1.05	3.00	4.55	6.54	9.44	11.34
David	WILKES	London	1.05	3.00	4.55	6.54	9.44	11.34
Leslie	SMITH	Surrey	1.05	3.00	4.53	6.59	9.44	11.34
Mark	ELGOOD	S. Hants.	0.59	2.45	4.32	6.45	9.42	11.50
Wiff	TAYLOR	S. Hants.	0.59	2.45	4.33	6.45	9.42	11.50
Ale	INGHAMER	Surrey	0.59	2.45	4.34	6.45	9.42	11.50

## THE STATISTICS OF NINE SURREY SUMMITS

Year	1976	1977	1978	1979	1980	1981	1982	1983	1984
Entries	26	77	169	106	172	150	151	181	180
Starters	26	61	141	96	150	125	125	161	162
Finishers	22	45	90	77	111	64	105	99	117
%	85	74	64	80	74	51	84	61	72
Female:									
Starters	3		18	2	9	11	6	17	14
Finishers	2	3	11	1	6	3	4	7	15

## NUMBER OF SURREY SUMMITS COMPLETED

- 9 Bill Grace and Martyn Greaves.
- 8 Keith Hewitt and Tony Rowley.
- 7 Phil Hastings, Richard Hotchkiss, Alan Ireland, Anthony Taylor and John Westcott\*
- 6 Brian Bickle, Brian Buttifant and Bill Perry\*
- 5 Bryon Alden\*, Michael Bennison, Barbara Blatchford, Henry Bridge, Chris Coates, Sue Coles, Robin Lambert\*, Mac McArthur\*, Mark Pickard\*, Geoff Stott, John Tomesen, David Whitehead, and Tony Youngs.
- 4 Dave Challenger, Derek Earl\*, Keith Jones\*, Mike Parks\*, Eric Rolfe\*, Ron Roweth, Paul Rutter, John Searl, Leslie Smith, Leonard Willcocks, Jim Winyard\* and David Woodyer.

There are 36 who have completed 3 Surrey Summits, 86 who have completed 2 and a further 251 who have completed it just the once.

\* Did not complete the 1984 event.

## THE TROPHIES

Phil Hastings and Roger Michell came back to defend the Leith Trophy. Teaming up with Tony Rowley they won it in fine style.

As the first Surrey team registered to finish was involved in the "not running" controversy, the committee decided not to award the Gibbet trophy this year.

Below is a letter I received from Phil Hastings:

2 Green Lane,  
Chislehurst,  
Kent.

10th April 1984.

Dear John & Co,

Many thanks for a wonderful effort over the weekend on your "Surrey Summits". We enjoyed our little team effort and had no problems with the route description. As you know I have always made a special effort on your event as it is a walking only venture which allows me an even chance. Over the previous weekend I was able to get out to walk the last 35 miles and do the night sections. I am led to believe that a number of people have done the same thing as myself.

We simply went out and did our best. The weather was kind to us and I was surprised to note how dry underfoot the going was when I remember the weekend before there was a layer of snow across the high ground and terrible mud in places. No rain was a blessing to us all.

It was a thoroughly enjoyable outing and well exercised at the end. On Monday the legs were sore!!

I might modestly say that I was 15 minutes inside my best time and so was Roger. We were well pleased with our effort. There was a stage at about half way, The Scout Hut, when we were on a 15 hour 20 minutes schedule but then slowly lost ground through the night. I mentioned to you last year you must get rid of that tea lady at Rammore Common!

Please thank Olive for her lovely wedding cake - I am still munching away at the hard icing. Thank all the people at checkpoints, it was a pity to leave at times but as we had made such a good start we wanted to keep the momentum going. It was difficult to drag ourselves away from lovely hot cups of tea and scrunch etc.

Cheerio for now, all the best,

Phil.