

BBN – Hartington 24th – 27th August 2018

BBN walking Holiday Hartington Itinerary



The walking weekend is centred on Hartington, a pretty village in the heart of the White Peak area of Derbyshire with its wonderful countryside and excellent walking opportunities. The main walks are on Saturday and Sunday. There's an introductory walk Friday afternoon and a departing walk Monday morning through to the afternoon. The walks are varied in length and go through villages and the dales near to Hartington.

This leaflet gives information about the walks and the starting points. If anyone has difficulty in getting to the start points or is delayed please contact Roy Carter 07784208997.

Accommodation will need to be obtained in Hartington or in the surrounding area.

There are Guest Houses, B&B's, Rental Properties, Campsites and a local Youth Hostel.

All the walks are on the OS Explorer Map OL24 'The Peak District - White Peak Area'.

Hartington

Hartington is the major village on the central section of the valley of the Dove. It is an old village which was granted a market charter in 1203. The church was built in the 14th – 15th centuries from local sandstone. Opposite the church stands the 17th century Hartington Hall which is now a Youth Hostel. Nuttall's creamery, once a source of Stilton and Buxton Blue cheese, lies just off the Green. Cheese was produced here from 1900 to 2009. Sadly, in 2008 the creamery was sold by Dairy Crest to Long Clawson Dairy, a rival Stilton maker (Leicestershire is one of the two other areas permitted to make Stilton cheese) and within a month they took steps to close the creamery down - with the loss of 190 jobs. Until then Hartington was the supplier of 25% of the world output of Stilton cheese. There is still a cheese shop outside selling a range of local cheeses but none now from Hartington.

It's 112 miles from Milton Keynes to Hartington village and will take around 2 hours to drive.

The direct route being: M1 north to J23A > A50 west > A515 north > B5054 west

Contact information: Roy Carter – 07784 208997

BBN – Hartington 24th – 27th August 2018

Day 1: Hartington – Friday 24th August – 1:30pm – 9 miles – Circular walk

The walk starts from the centre of Hartington by the Duck Pond.

After passing the old Nuttall's creamery, once a source of Hartington Stilton and Buxton Blue cheese, we cross the River Dove and climb up hill to the village of Sheen passing the church. We then skirt Sheen hill and descend slowly to cross the River Dove at Crowdecote and take an afternoon break. We return by walking beside the river to the remains of Pilsbury Castle and then climb above the valley and follow the scenic River Dove back to Hartington.

Explorer Map 0L24 Grid Ref: SK 128 605 Postcode: SK17 0AW



Sheen Church



Pack Horse Inn, Crowdecote

The earthwork remains of Pilsbury Castle occupies an area of high ground overlooking the River Dove and was probably originally an Iron Age fortification before being used by the Normans. Indeed the name 'Pilsbury Castle' is formed from the Celtic 'pil', the Saxon 'bury' and the Norman "castle", all meaning a 'fortified site'.

Parking Information:

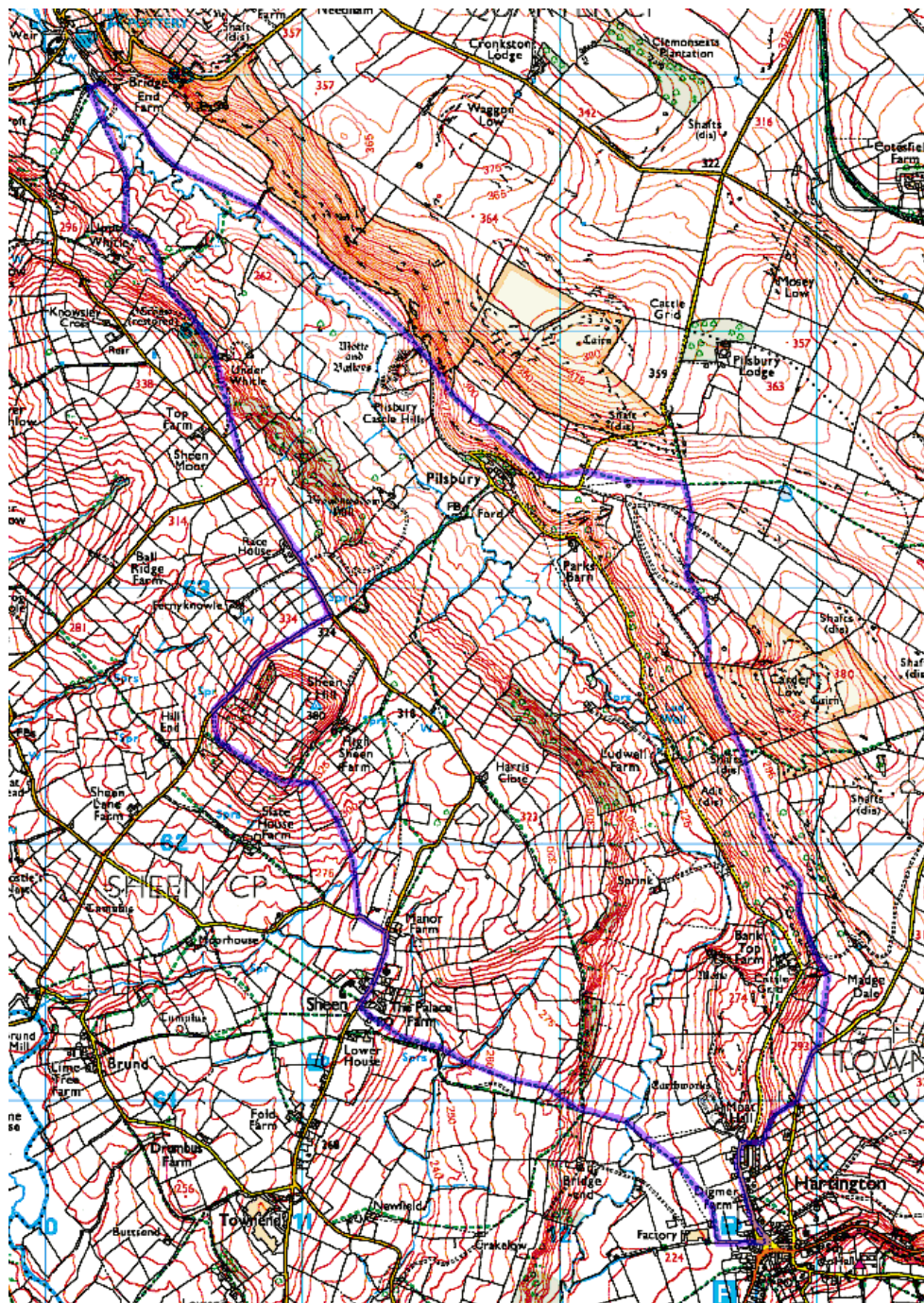


There is some parking around the Duck Pond and in the village square.

More parking is available in the main tourist carpark on the road to Hulme End although there is a parking charge

Start Time 1:30pm
From Hartington Duck Pond
SK17 0AW

BBN - Hartington 24th - 27th August 2018



BBN – Hartington 24th – 27th August 2018

Day 2: Hartington – Saturday 25th August – 9:30am – 17 miles – Circular walk

The Dovedale walk goes to Beresford Dale, above Narrowdale and then descends to Hopedale and gradually climbs back up to Castern Wood and Castern Hall. There are lovely views of the Manifold Valley as we drop into Ilam Country Park and Hall for lunch. After lunch we cross the stepping stones over the River Dove and follow the valley up to Milldale for afternoon tea. We then continue up Dovedale to Hartington taking either Wolfescote Dale or Biggin Dale route.

Explorer Map 0L24 Grid Ref: SK 128 605 Postcode: SK17 0AW



Ilam Cross



Stepping Stones

The Ilam Hall was built in the 1820's and was converted into a luxurious hotel in the 1920's. The business went bankrupt and the house was sold for demolition. A benefactor saved the day by donating it to the National Trust in 1934. Today it houses a Youth Hostel and a Learning Centre. The church in Ilam is Saxon in origin and inside contains a font of the same age carved with humans and dragons. There will be plenty of time to look at these places and visit the Manifold tearooms. For those wanting a sharp hill climb after lunch, Thorpe Cloud (942 feet) offers excellent views over the River Dove and Ilam (a short detour after the stepping stones).

Parking Information:

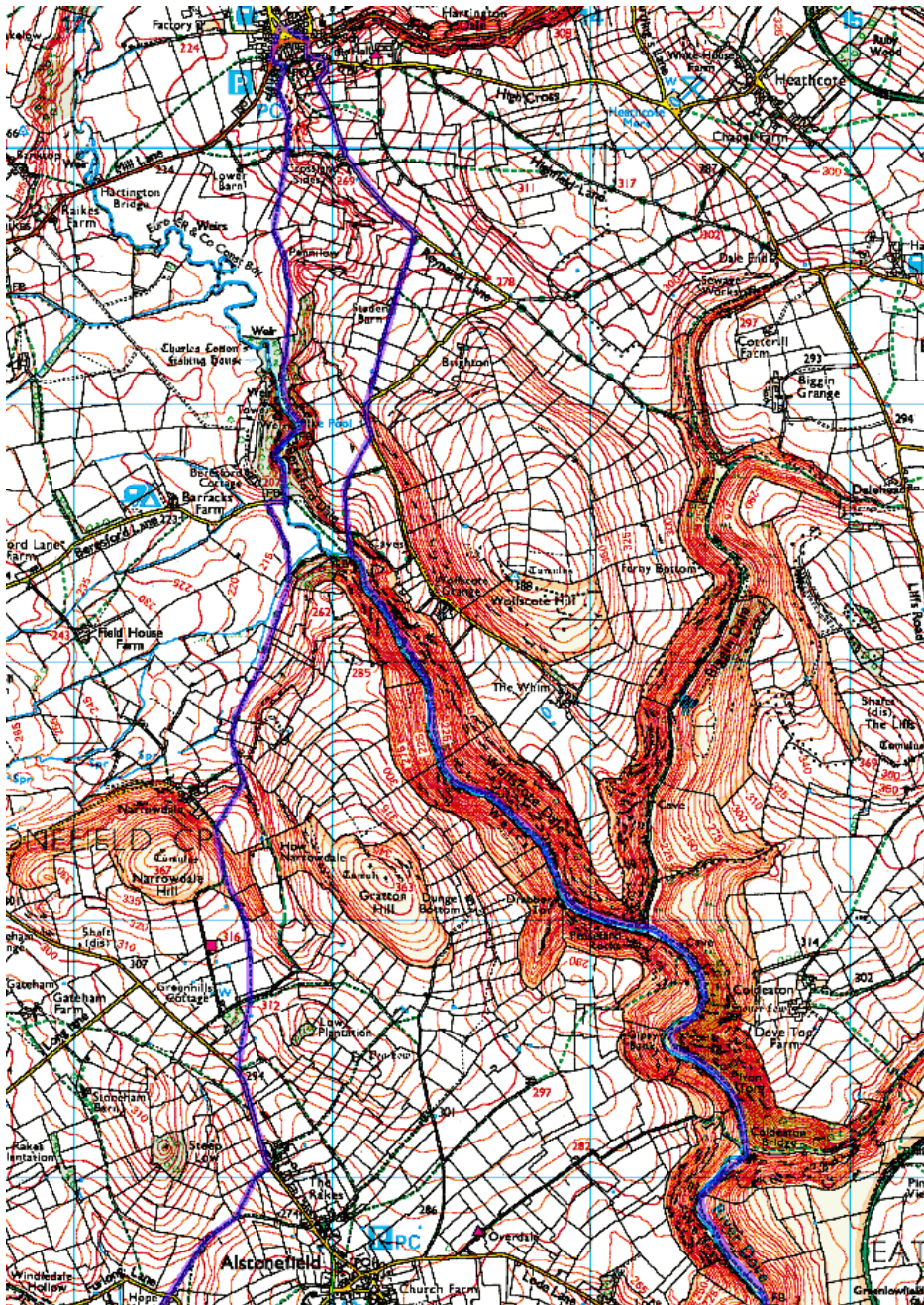


There is some parking around the Duck Pond and in the village square.

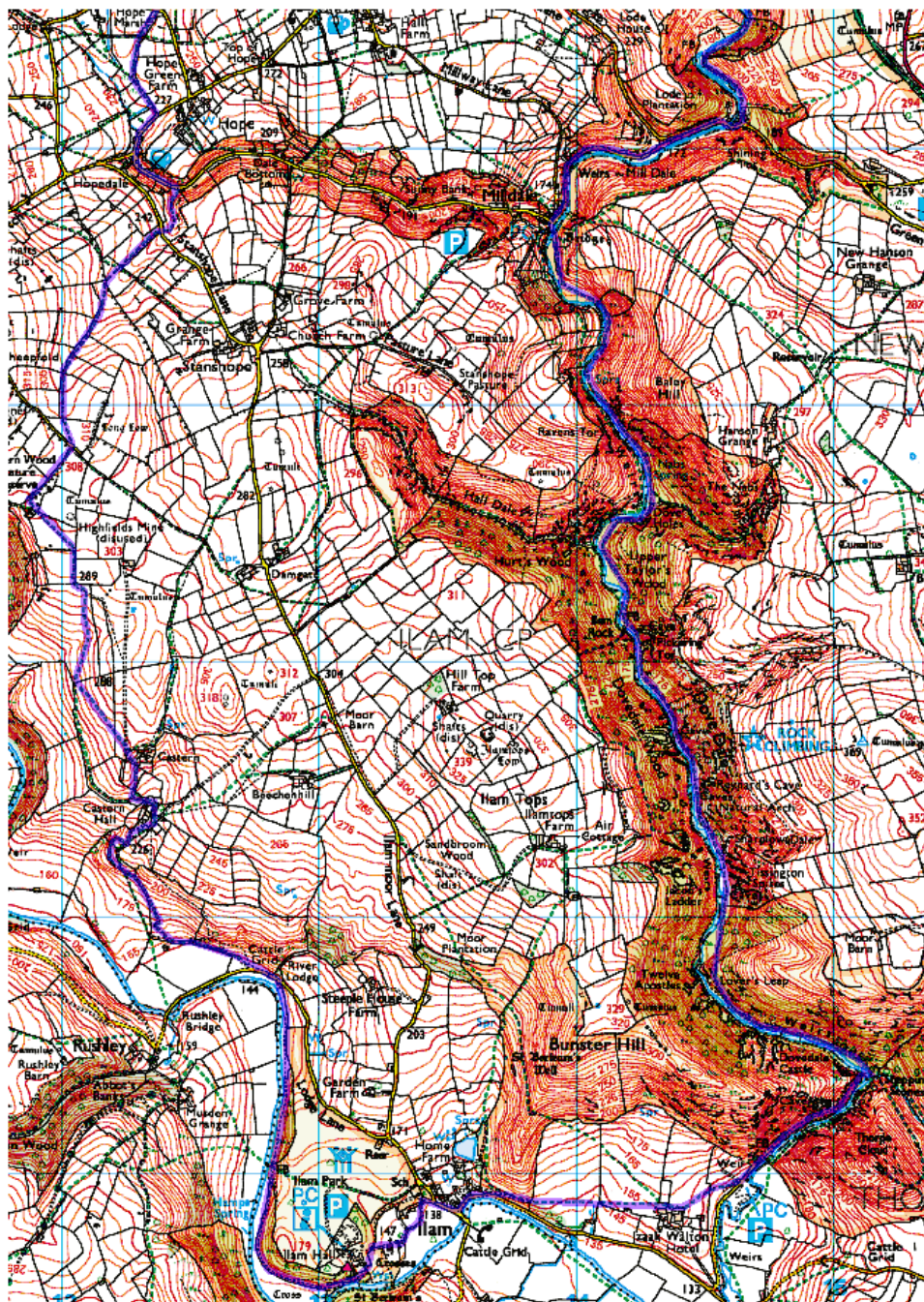
More parking is available in the main tourist carpark on the road to Hulme End although there is a parking charge

Start Time 9:30am
From Hartington Duck Pond
SK17 0AW

BBN – Hartington 24th – 27th August 2018



BBN - Hartington 24th - 27th August 2018



BBN – Hartington 24th – 27th August 2018

Day 3: White Lodge – Sunday 26th August – 09:30am – 16 miles – Circular walk

The walk starts from White Lodge Car Park (charge), situated just off the A6 near Monsal Dale. We will walk up Monsal Dale, cross the Monsal Trail to Cressbrook Mill. Then follow the River Wye through Miller's Dale to Litton Mill keeping to the valley floor and pass through Tideswell Dale to reach Tideswell for a break. Afterwards we make our way to Monk's Dale and descend to Miller's Dale again for lunch at The Angler's Rest. In the afternoon we walk the Monsal Trail to Ashford in the Water and return beside the River Wye to the carpark.

Explorer Map OL24 Grid Ref: SK 171 705 Postcode: SK17 9UH



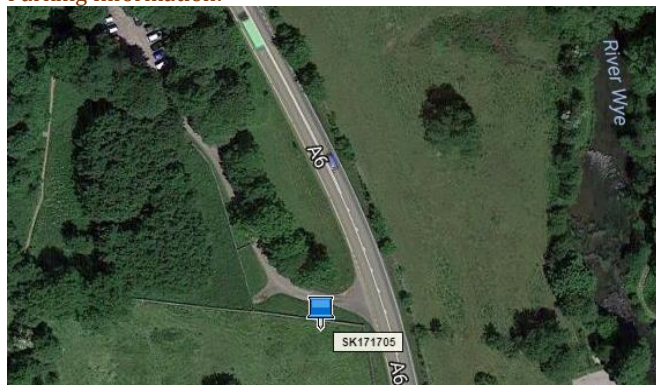
Cressbrook Mill



Monsal Trail

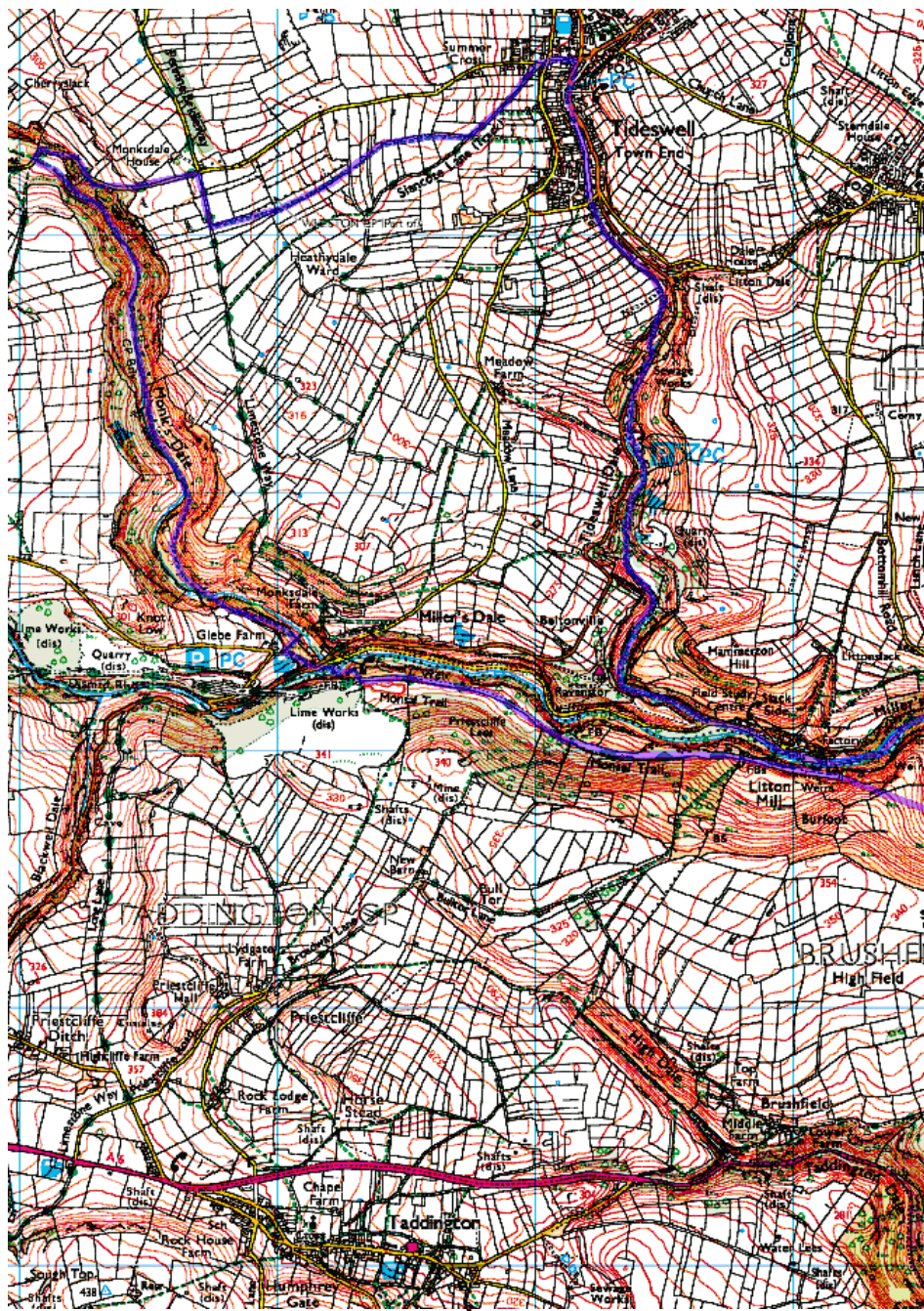
The original textile mill at Cressbrook was built by Sir Richard Arkwright, often called the 'father of the industrial revolution' for his invention of the spinning frame. Tideswell Church is widely known as the 'Cathedral of the Peak' (it is not a cathedral) due to its size and splendour. Inside, there is an exhibition of the works of William Newton (1750–1830), a labouring class poet often referred to as 'the Peak Minstrel'. He made his fortune as owner of Cressbrook Mill and the exhibition includes details of the life of apprentices at Litton and Cressbrook mills.

Parking Information:

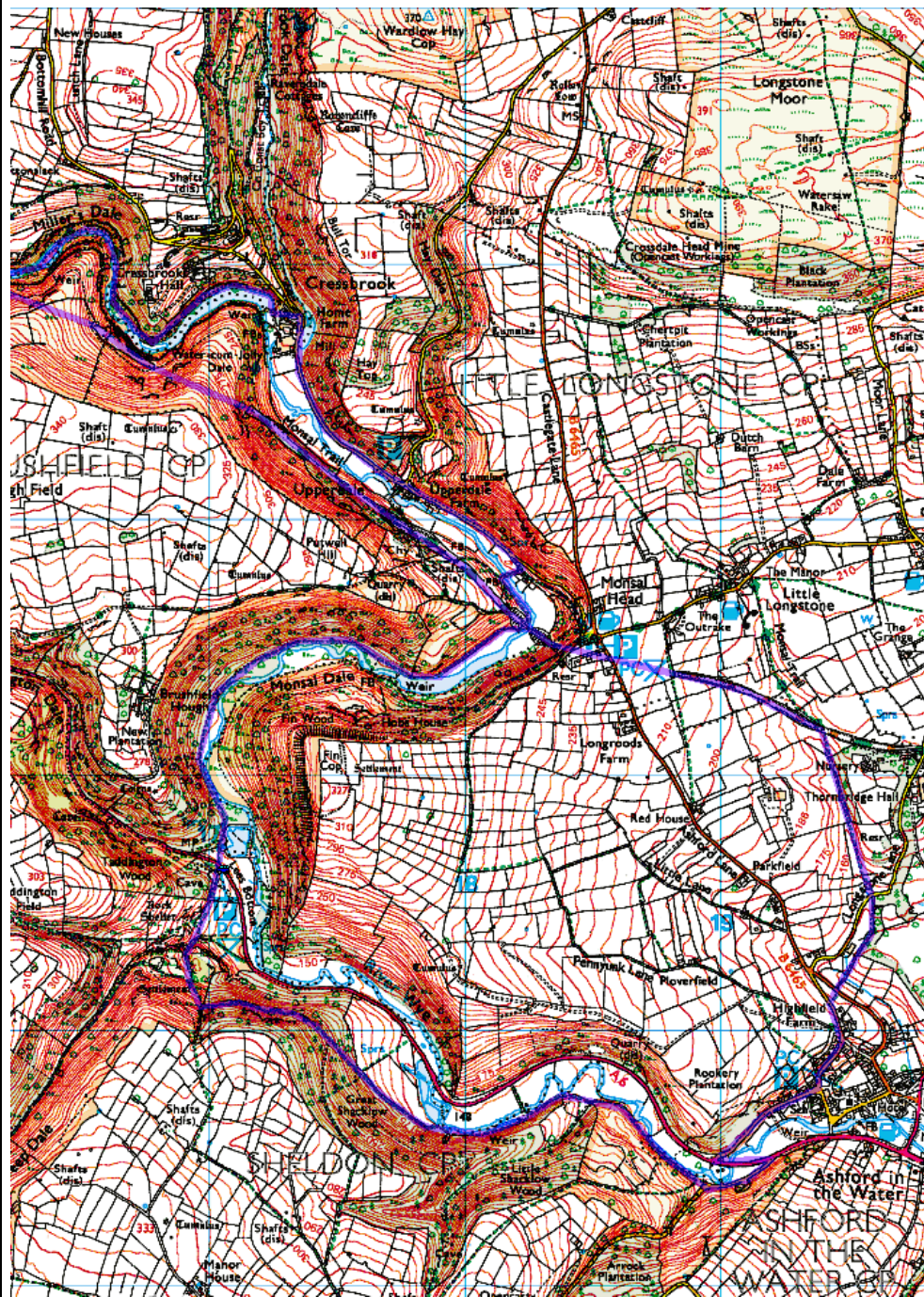


White Lodge Car Park is situated off the A6 near Monsal Dale. There is a charge. It is 10 miles from Hartington (25 minutes by car).
Start Time 09:30am
SK17 9UH

BBN - Hartington 24th - 27th August 2018



BBN - Hartington 24th - 27th August 2018



BBN – Hartington 24th – 27th August 2018

Day 4: Monyash – Monday 27th August – 10:00am – 13 miles – Circular walks

The walk starts from the pond at Monyash and follows the Limestone Way over fields and past farmyards before a steep climb out of Cales Dale. We walk round to Middleton and descend to the River Bradford and follow it to Youlgreave for a break. The walk goes further down river to Alport and up Lathkill Dale - one of the finest limestone dales. Leaving it we ascend to Over Haddon to enjoy lunch and views down the dale from the Lathkill Hotel. In the afternoon we return to Lathkill Dale and follow it back to Monyash for tea in the café and homeward journey.

Explorer Map 0L24 Grid Ref: SK 150 666 Postcode: DE45 1JJ



Monyash Mere



River Bradford

Lathkill dale is one of the finest of the limestone dales and a Nature Reserve. The section of the dale above Over Haddon was once home to several very profitable lead mines. The mines were worked from the 13th century until operations ceased in 1851, defeated by water problems. Sections of the workings may still be seen, especially the aqueduct which carried water to a large water wheel that was once used to pump water from the mine. One consequence of the mines was the water table was lowered considerably and in a drought the river would run almost dry - indeed in an average summer there may be little more than a trickle of water.

Parking Information:



Drive 6 miles to Monyash and park considerably in the village. It should take 15 minutes in the car

Start Time 10:00am
From Monyash village
DE45 1JJ

BBN - Hartington 24th - 27th August 2018

